



United Nations  
Educational, Scientific and  
Cultural Organization

# International emergency preparedness and response mechanism of UNESCO





# UNESCO's Action on Culture in Emergencies

- **POLICY:**

Strategy on Culture in Emergencies

- **COORDINATION:**

HQ

Field Offices

International & national level

- **FUNDING:**

Heritage Emergency Fund



# Why a Heritage Emergency Fund?

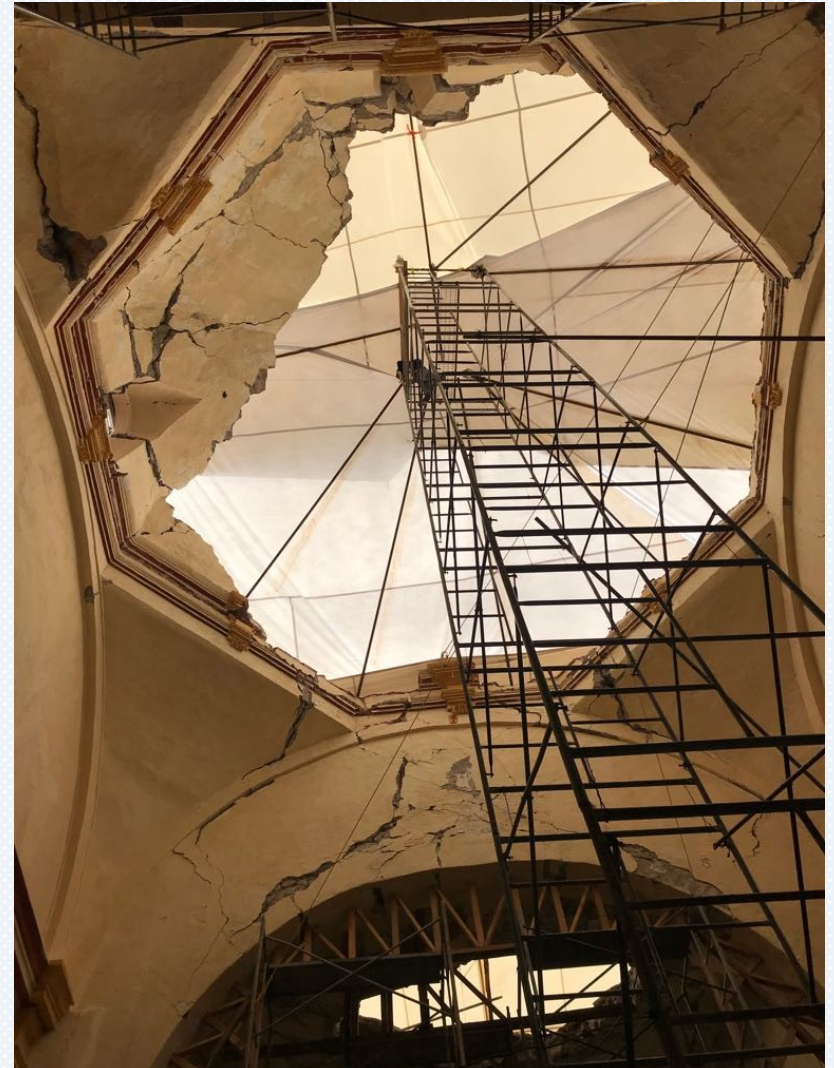
To satisfy **3 needs**:

- **Rapidity**
- **Flexibility**
- **Cross-cutting work**



**Activities** related to:

- **Emergency preparedness**
- **Emergency response**
- **Awareness-raising**



# The Rapid Response Mechanism

- A **Roster of experts** belonging to 13 generic profiles
- Two **e-learning modules** for Roster members
- **Protocols** for rapid deployment





# Museums Unit



## TO IMPLEMENT THE **UNESCO 2015 RECOMMENDATION ON MUSEUMS AND COLLECTIONS**

**Priorities** to safeguard and promote heritage through museums:

- Promote the **UNESCO 2015 Recommendation on Museums and Collections**
- **2019: Report** on the implementation of the 2015 Recommendation (**Dr Darko Babic, Croatia, Expert for Group II**)
- Accompany Member states in their policies for **museums development** (creation or refurbishment of museums, transfer of knowledge, publications)
- **Emergencies:** Backstopping (disasters and conflicts); UNESCO/ICOM survey on impact of COVID on Museums (in preparation)
- Implement and backstop **projects related to museums and collections**
- **Publications** (multilingual)



# Museums in Emergencies

- **National Museum of Sudan:** Development of emergency preparedness and response plans
- **Museum of Central Sulawesi in Indonesia:** Safeguarding interventions
- **National Museum in Damascus:** Documentation
- **National Museum in Rio de Janeiro:** Assessment and advisory mission



# National Museum in Rio de Janeiro: Lessons Learned

## **Governance**

Strategic Planning/Legal Framework/Coordination/Museums Empowerment (BBB)

## **Emergency Rescue**

Museum items and building fragments rescuing/  
Documentation/Conservation, Restoration, Conditioning and Storing

## **Building**

Assessment/stabilisation/Documentation Retrieval/Restoration and eventual  
Reconstruction (how)

## **Collection**

Assessment/Inventory/Recontextualisation/conservation and  
restoration/Identification of Offers and Partner Institution/New Collection

## **Social Inclusion**

Consultation with all Communities: Museum Professionals/NGOs/  
Artists, Schools, Researchers, Associations...

